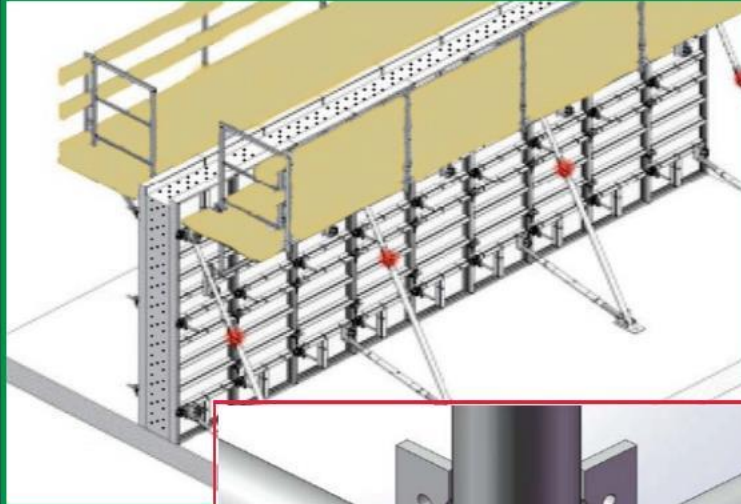
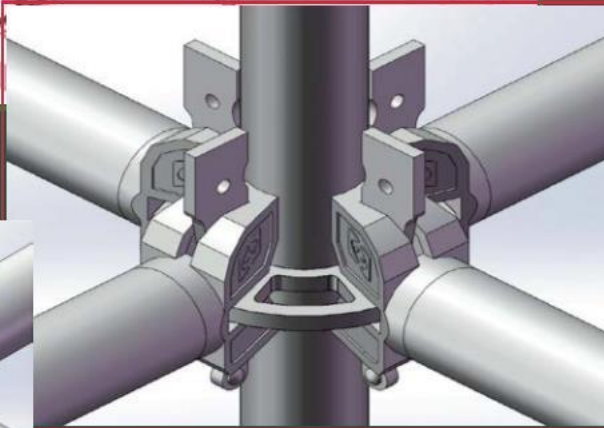


ZHONGHONG(TANGSHAN) CONSTRUCTION ENGINEERING CO.,LTD

FORMWORK



**CUPLOCK SYSTEM
SCAFFOLD**



RINGLOCK SYSTEM SCAFFOLD

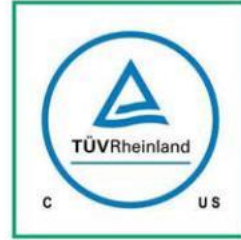


Contact Person :Anne Yu
RD@zhonghongts.com

+86 139 3333 9777

ABOUT US

We are the largest industrial enterprises in Tianjin China, manufacturing and distributing quality and economical scaffolds, formworks, structural steels.



GOAL

Customers satisfaction and success

EXPERTISE

25 years of manufacturing and exporing experience

CAPACITY

180 staffs & 100 sub-suppliers, up to 10000 tons of capability a year

SERVICE

Team work and prompt response for customers need whatever, whenever and wherever. Supplying products with variety and entireness or according to customer's & buyer's special requirement.

QUALITY

Meet BS/EN, ANSI, JIS, OSHA, AS/NZS

Under QC/QA complying with ISO9001

High strength premium materials

Excellent workforce and qualified workers, such as welders

Various options of rust resistance

Long term cooperation with the first class shipping and forward company

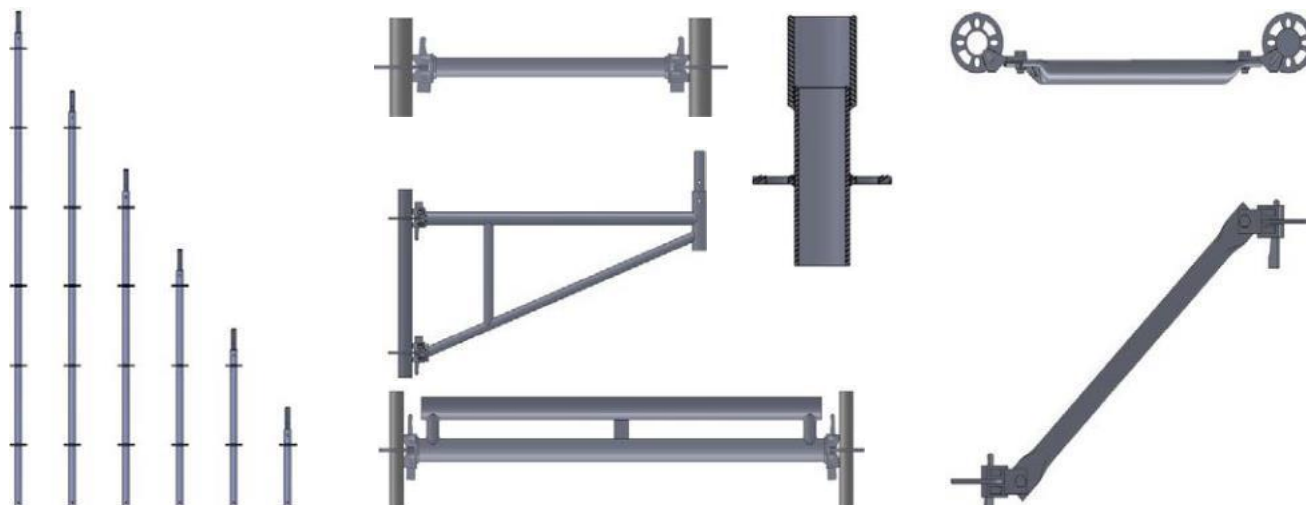
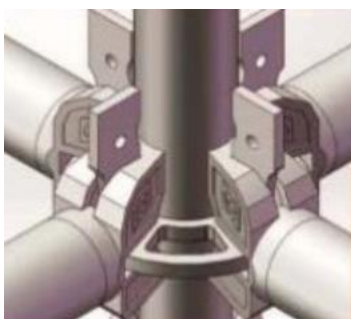


[For detail information](#)

CUPLOCK SYSTEM SCAFFOLD



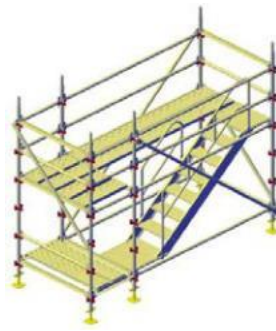
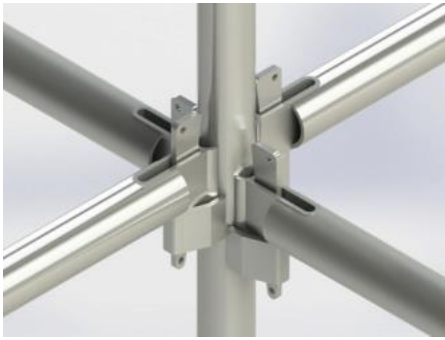
RINGLOCK SYSTEM SCAFFOLD



[For detail information](#)

RD@zhonghongts.com

KWIKSTAGE SYSTEM SCAFFOLD



STEEL & ALUMINUM SCAFFOLD TUBES



Item:	Scaffolding Steel Pipe
Out Diameter:	48.3mm
Thickness:	2.4mm, 3.25mm, 3.75mm, 4mm
Length:	5.8m or 6m or as per customer's requirements
Finishing:	Hot Dip Galvanization, Electric Galvanization, Powder Coating, Paint
Packing:	Hexagon Packing with Steel Strips, 91pcs/Bundle

ALUMINUM TUBE



SIZES	OUTSIDE DIAMETER	WEIGHT
From 1'-20'	1.9' OD	0.94 lbs/ft

TWIST LOCK TUBE



FRAME SYSTEM SCAFFOLD



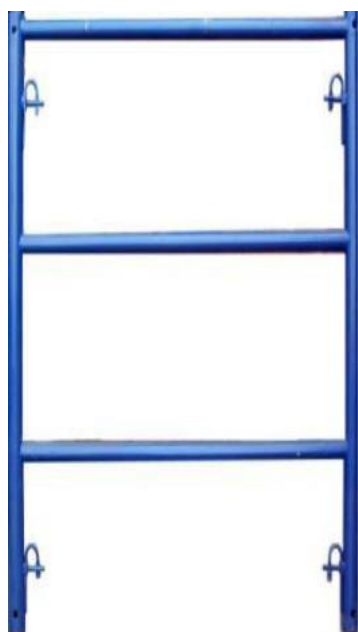
SF-23



SF-24



SF-25



SF-26



SF-45



SF-46

[For detail information](#)

FRAME SYSTEM SCAFFOLD



Snap-On
BOX SL 2'X20"



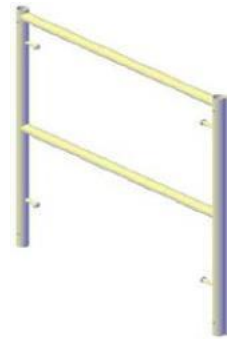
Snap-On
BOX SL 2'X40"



Snap-On
BOX SL 3'X20"



Snap-On
BOX SL 3'X40"



Snap-On
BOX SL 3'X4'



Snap-On
BOX SL 5'X5'



Snap-On
BOX SL 5'X6'8"



Snap-On
APT FRAME2'X8'8"



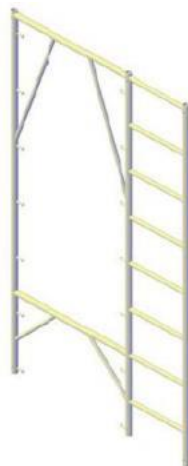
Snap-On
APT FRAME3'X8'8"



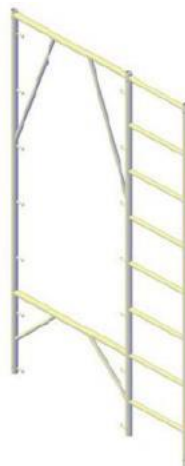
Snap-On
APT FRAME2'X10'8"



Snap-On
APT
FRAME3'X10'8"



Snap-On
APT
FRAME3'X8'8"



Snap-On
FRAME3'X10'8"
W/LADDR



Snap-On
FRAME3'X11'8"



Snap-On
WALK THRU SL
2'X5

[For detail information](#)

FRAME SYSTEM SCAFFOLD



Snap-On
WALK THRU 3'X6'8"



Snap-On
WALK THRU
3'X6'8"W/LADDR



Snap-On
BOX FL 5'X6'7"
LDDR 1 SIDE



Snap-On
BOX FL 5'X6'8"
LDDR 1 SIDE



Snap-On
BOX FL 5'X5'1"
W/LADDR



Snap-On
BOX FL 5'X5'1"
LADDER 2 SIDE



Snap-On
BOX FL 5'X6'8"
LADDER 2 SIDE



Snap-On
WALK THRU
5'X6'7"



Snap-On
WALK THRU
5'X6'8"



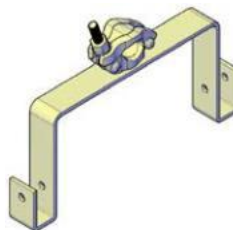
Snap-On
BOX DL 5'X6'4"



18"X6'8" ACCESS
Ladder W2 clamp



6' ACCESS
LADDER
18"X6'



ACCESS LADDER
STRTER BRACKET
18"X1-5/8"



GUARD RAIL
POST
W/RIVETS



24"EXTENSION
BASE PLATE

[For detail information](#)

FRAME SYSTEM SCAFFOLD



6' FOLDING
TRESTLES



4' FOLDING
TRESTLES



3' FOLDING
TRESTLES



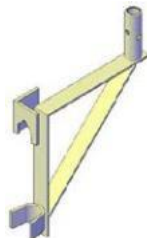
2' FOLDING
TRESTLES



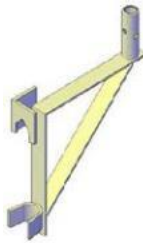
2' EXTENSION



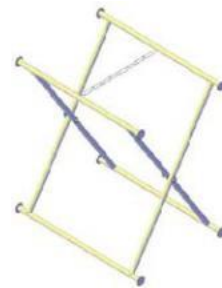
3' EXTENSION



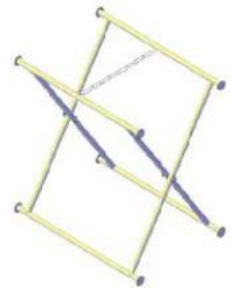
SIDE BRACKET
SOCKET/SL 12"



SIDE BRACKET
SOCKET/SL 20"



MORTAR BOARD
STAND SGL 30"X20"



MORTAR BOARD
STAND SGL 30"X6"



GOOSER

0902-0856

7'X3'

0902-0858

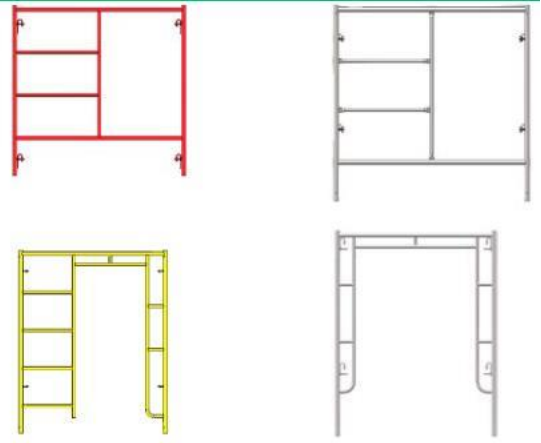
7'X5'

0902-0860

10'X5'

[For detail information](#)

FRAME SYSTEM SCAFFOLD



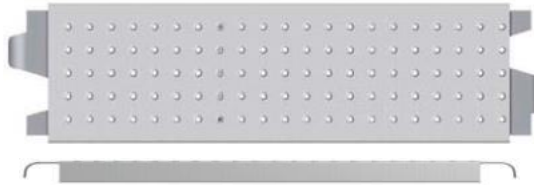
ACCESSORIES



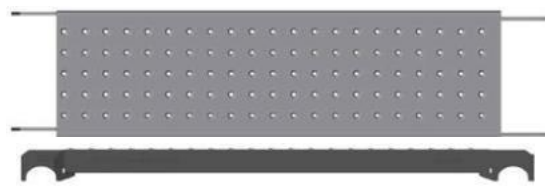
[For detail information](#)

PLANK & BOARDS & DECKS

9" LOW PROFILE STEEL PLANK



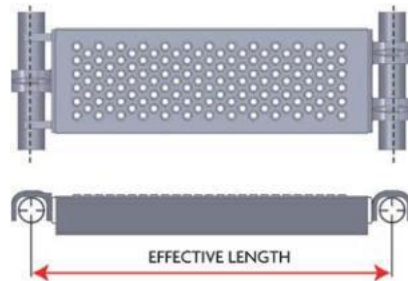
9" STEEL PLANK



12-1/2" STEEL PLANK



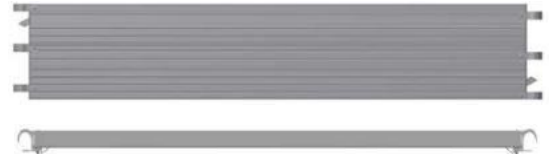
7-9/16" FILLER STEEL PLANK



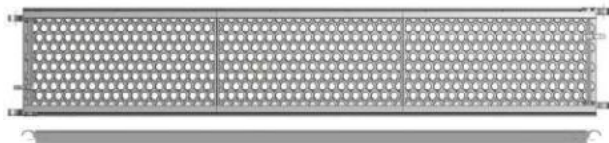
9.5" ALL AL. WALK BOARD



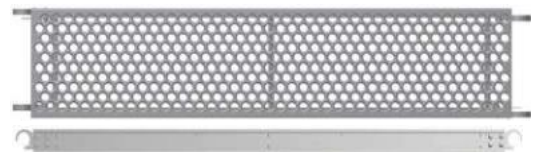
9.5" ALL AL. PLANK



19" WIDE AL. RAIL STEEL TOP BOARD



19" WIDE AL. FRAME STEEL DECK



STAGE BOARDS



9" STEEL BATON BOARD



28" HATCH PLANK W/ AL. LADDER



[For detail information](#)

SCAFFOLD COUPLERS & CLAMPS



CRA19-A
Drop Forged Right Angle Couplers
48.3×48.3mm-American Style
1.600kg/pc
EP or HDG



CSA19-A
Drop Forged Swivel Couplers
48.3×48.3mm-American Style
1.800kg/pc
EP or HDG



CRA19-G
Drop Forged Right Angle Couplers
48.3×48.3mm-German Style
1.250kg/pc
EP or HDG



CRA19-W
Right Angle Wedge Coupler
48.3×48.3mm
1.500kg/pc
Inleaked Galv.



CSA19-G
Drop Forged Swivel Couplers
48.3×48.3mm- German Style
1.340kg/pc
EP or HDG



CRA19-BG
Drop Forged Right Angle Couplers
48.3×48.3mm-British Groove Style
1.050kg/pc
EP or HDG



CSA19-BG
Drop Forged Swivel Couplers
48.3×48.3mm- British Groove Style
1.250kg/pc
EP or HDG



CSA19-W
Swivel Coupler 48.3×48.3mm
1.750kg/pc
Inleaked Galv.



CRA19-BF
Drop Forged Right Angle Couplers
48.3×48.3mm-British Flat Style
1.050kg/pc
EP or HDG



CSA19-BF
Drop Forged Swivel Couplers
48.3×48.3mm- British Flat Style
1.250kg/pc
EP or HDG



DFSJ
Drop Forged System
Expansion Joint Pin
1.250kg/pc
EP or HDG



CRA19-F
Right Angle Flat Bar Coupler
48.3×48.3mm
1.200kg/pc
Black with oil



SSC
System Sleeve Coupler
1.230kg/pc
EP or HDG



IBTC
Drop Forged I-Beam Tube Coupler
1.500kg/pc
EP or HDG



IBTC-N
Drop Forged I-Beam Tube
Coupler-New Style
1.400kg/pc
EP or HDG



CSA19-F
Swivel Flat Bar Coupler
48.3×48.3mm
1.200kg/pc
Black with oil



CRA19-P5
Pressed Right Angle Coupler
Thickness 5mm
1.100kg/pc
EP



CSA19-P5
Pressed Swivel Coupler
Thickness 5mm
1.150kg/pc
EP



CRA19-P3
Pressed Right Angle Coupler
Thickness 3mm
0.650kg/pc
EP



CSA19-P3
Pressed Swivel Coupler
Thickness 3mm
0.650kg/pc
EP



PSJ
Pressed System Expansion Joint Pin
0.560kg/pc
EP



Wedge Style Sleeve Coupler(Joiner)
1.050kg/pc
ZINCATING



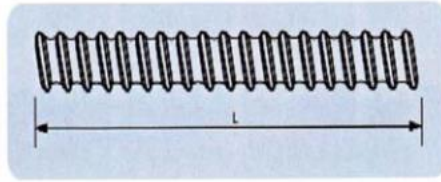
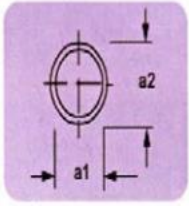
HX010
Swivel Girder Coupler
1KG



For detail information

TIE RODS & ROCKBOLT & HARDWARE OF FORMWORK

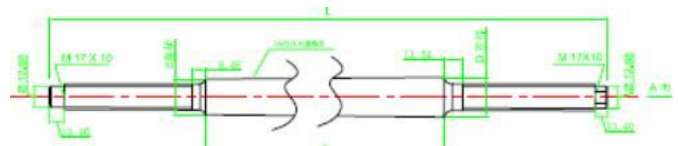
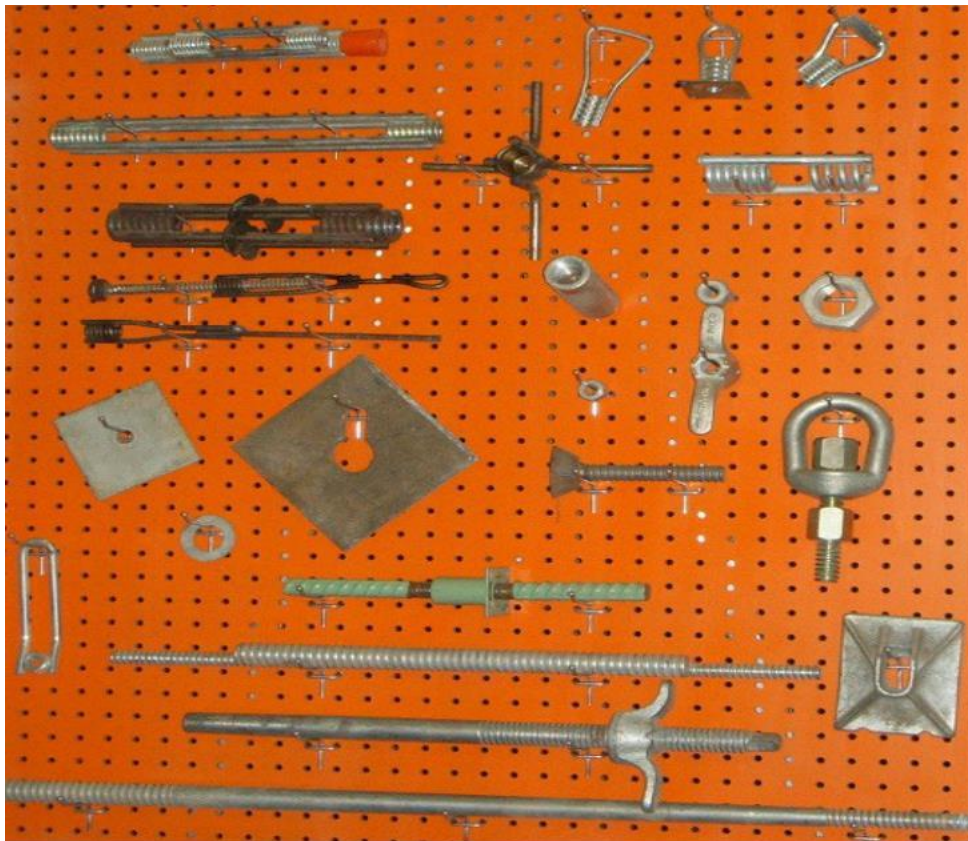
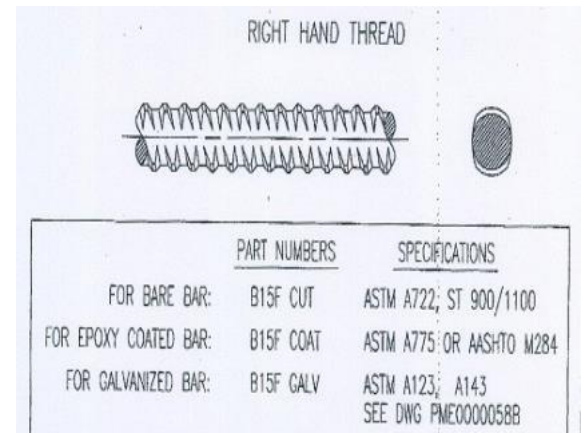
Cold Rolled Tie Rod



Material	Steel 45
a1/a2	15/17mm
Weight	1.52 kg/m
Working Load	90 kN
Ultimate load	160 kN

Material	40 Cr
a1/a2	15/17mm
Weight	1.52 kg/m
Working Load	100 kN
Ultimate load	190 kN

Hot Rolled Tie Rod




For detail information

STEEL SHORING & PROPS

Heavy duty shoring props



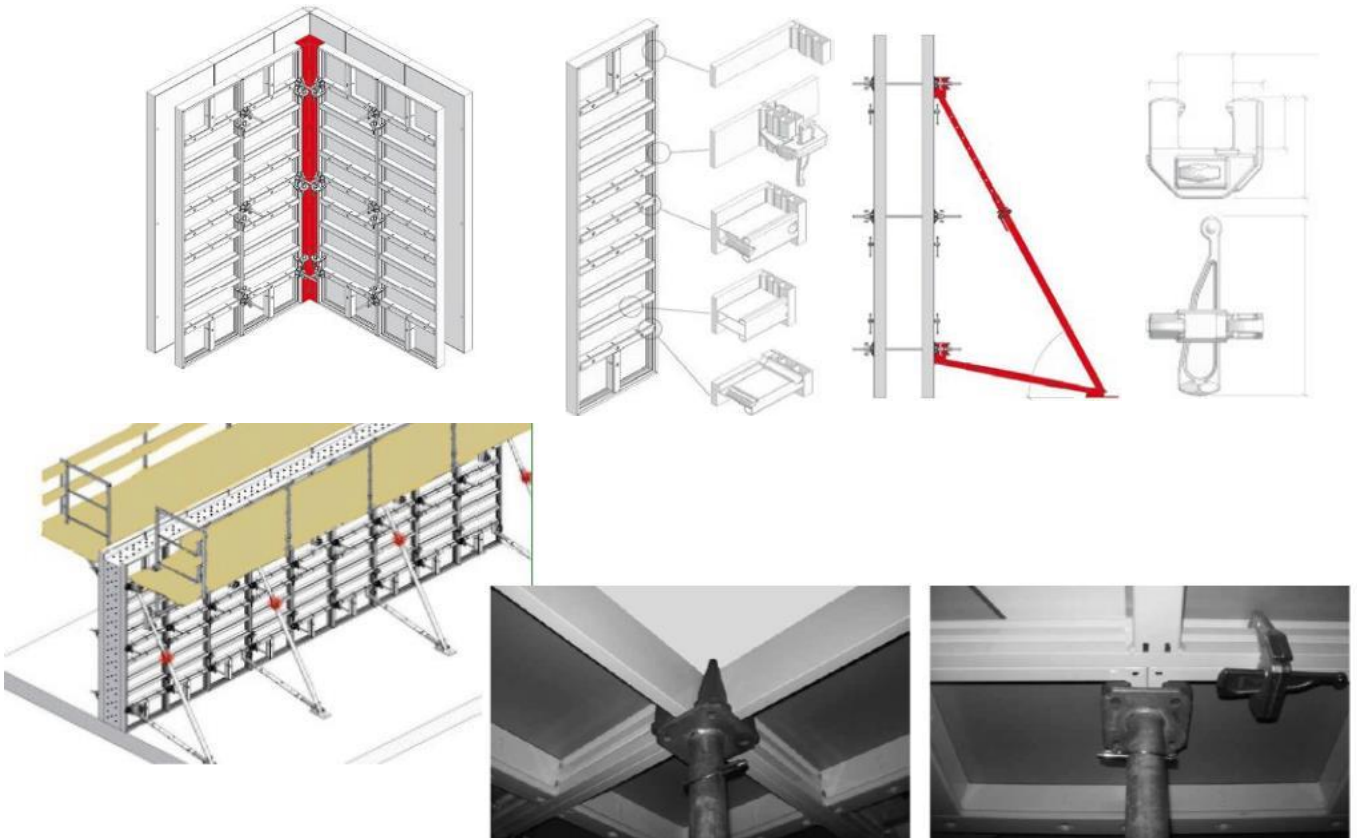
Medium duty props with accessories

item	picture	sizes	surface finishing	weight +/- 3%(kgs)
1.95M to 3.5M		Outer tube:Q235,60*2.0. Inner tube:48*2.0mm; Screw Nut:0.73kg. Top/bottom plates:120*120*5mm	powder coated	11
2.6M to 4.0M				12
3.1M to 4.5M				13.2
Tripod		25*2.0mm;800mm		6
U head		120*100*50*4mm. 32*2.0*100mm		1

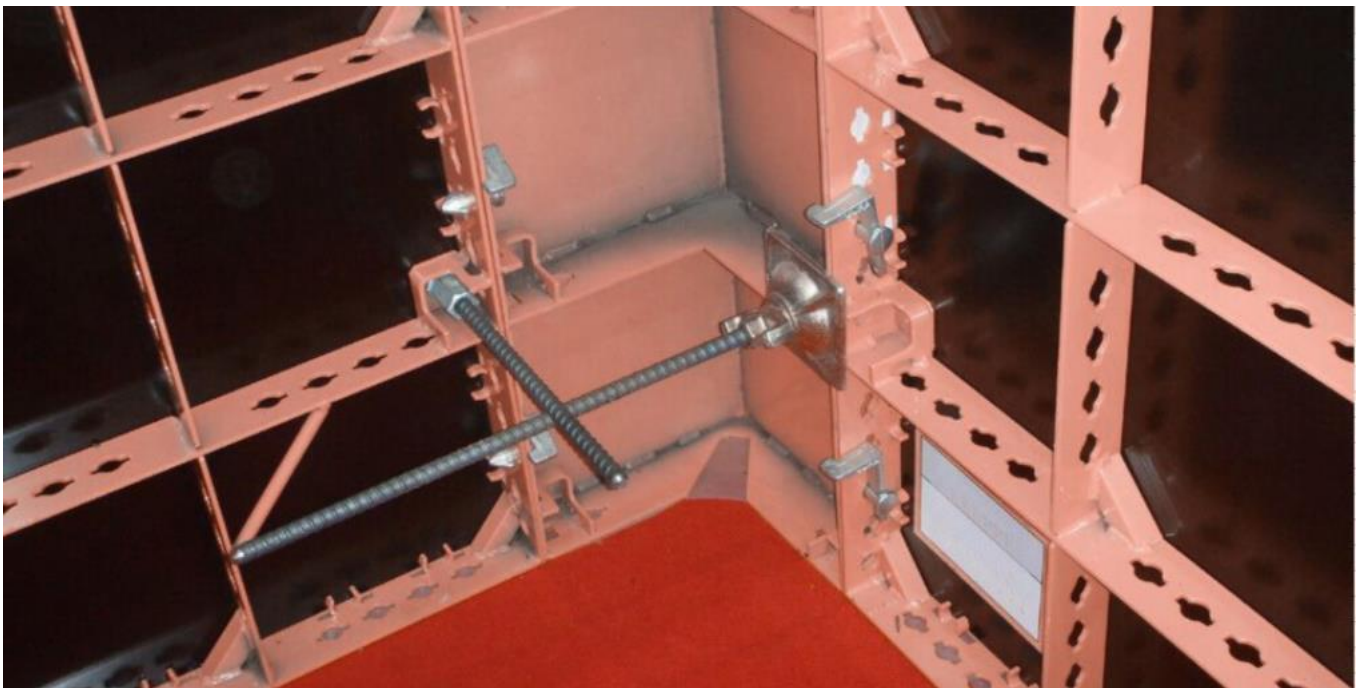
	Light Duty Prop	
	Adjust length:	1.98m to 3.35m
	Inner pipe:	48*1.8mm
	Outer pipe:	56*1.8mm
	Pin:	G-12mm
	Plate:	120*120*4mm
	Surface treated:	Powder coated
	Weight:	9.6kg+/-0.5%
	Qty:	1500pcs/20'GP 2500pcs/40'HQ
	FOB Tianjin	
	Payment term:	30% prepaid, 70% by the copy of B/L.
	Price available:	

[For detail information](#)

ALUMINUM FORMWORK PANEL



STEEL FORMWORK PANEL



[For detail information](#)

FORMWORK NUTS & ACCESSORIES



CASTERS WHEELS



CRAB SYSTEM SCAFFOLD



[For detail information](#)

STAIRS & LADDERS



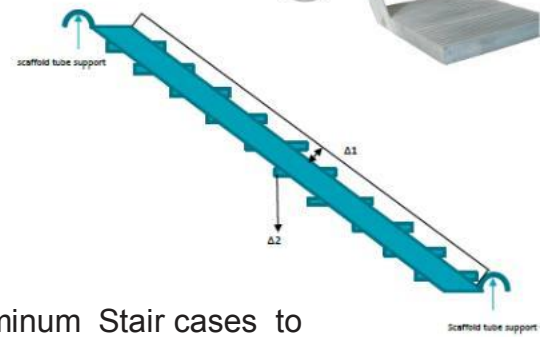
TABLE			
ITEM	L(MM)	L1(MM)	N
3M	3000	125	11
4M	4000	125	15
5M	5000	125	19
6M	6000	125	23



6m extension ladder



ladder with support



Aluminum Stair cases to fit Turnlok or Tube and fitting, Available in 2m and 1.5m lifts



[For detail information](#)

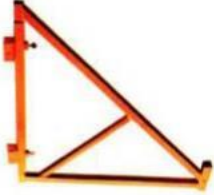
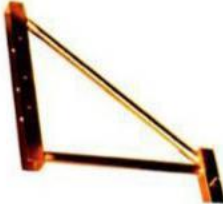

ROLLING TOWERS



- * Tested and complies with Australian & New Zealand Standard 1576.3
- * Lightweight for easy setup and use
- * 8 inch wheels for easy maneuverability
- * Wide tower for spacious work area, for tools and materials
- * Superior grade aluminum construction

Length	2.5m
Width	1.25m
Platform Height	1.0m to 6m
Maximum Scaffold Height	6.0m
Maximum Work Height	7.0m
Safe Working Load	450k g
Tube Material	Aluminum 6061-T6
Tube Diameter	50.8mm
Tube Wall Thickness	2mm
Wheels Size	8 inch
Platform Size	2.5m, 0.6 m
Platform Material	Aluminum & Laminated Plywood

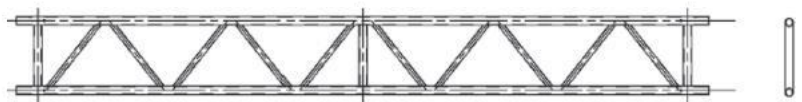
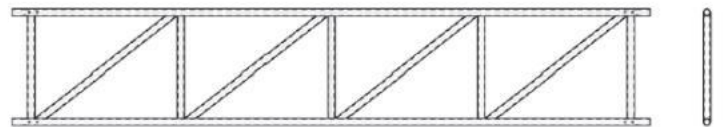
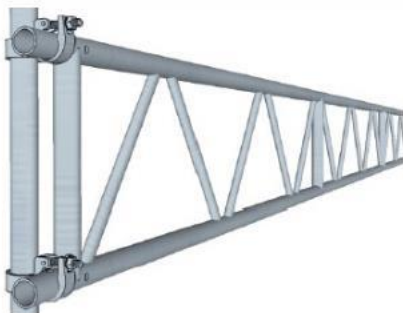
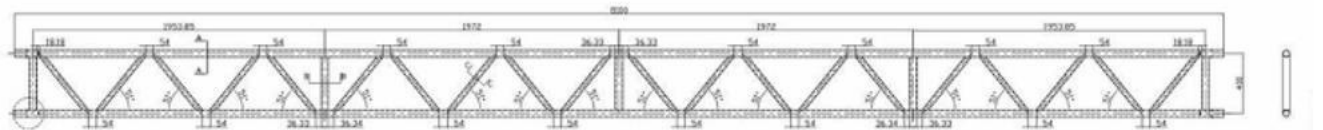
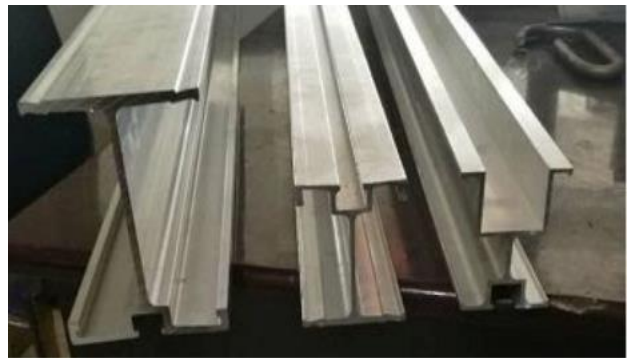
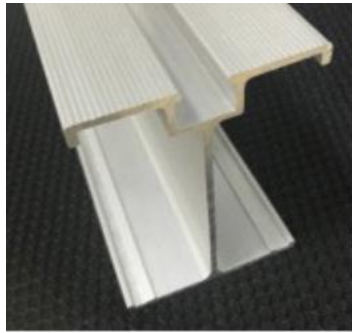
Multifunction Scaffold		
	Item:	MFS
	Description:	Steel Multifunction Scaffold
	Weight:	70.5KG
		A complete Multi-function scaffold set includes:
		-2 units of 29" Wide x 65" High Frame
		-2 units of Platform Truss
		-4 units of 5" Rubber Cast Wheel w/Brake
		-1 unit of Steel/Plywood Plank
	Loading Capacity:	1000Lbs
	Finishing:	Powder coated
	Color:	Yellow, green, red, grey
	Package:	in Carton per set

Related Items:		
		
Wide Outrigger	Narrow Outrigger	Guard Rail

Mini Scaffold		
	Item:	Mini Scaffold
	Description:	Steel Mini Scaffold(with Plank and Casters)
	Weight:	30.4KG
		Easily fold and unfold
		Folding to less than 5" deep
		Useful for inside construction, repair and maintenance work
	Loading Capacity:	500Lbs
	Finishing:	Powder coated
	Color:	Yellow, green, red, grey
	Package:	in Carton per set

[For detail information](#)

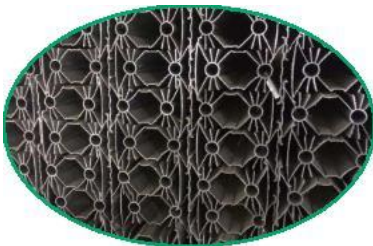
ALUMINUM BEAMS



[For detail information](#)

STEELS-STAINLESS & ALUMINUM STRUCTURE

We usually make structural steels, beams/ supports/ posts/ columns, wall panels, roof panels and windows as per customer's designs. Please see some illustrations below.



[For detail information](#)

MONO SYSTEM SYSTEM SCAFFOLD

Verticals



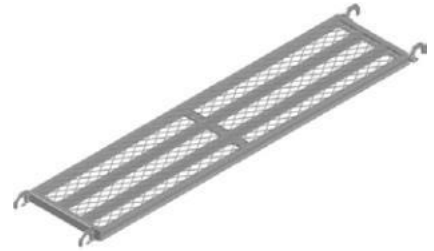
Horizontals



Board Bracket

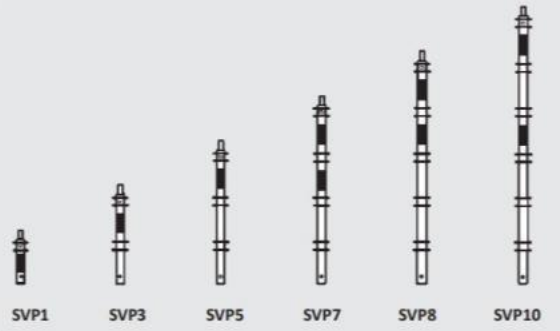


Walk board

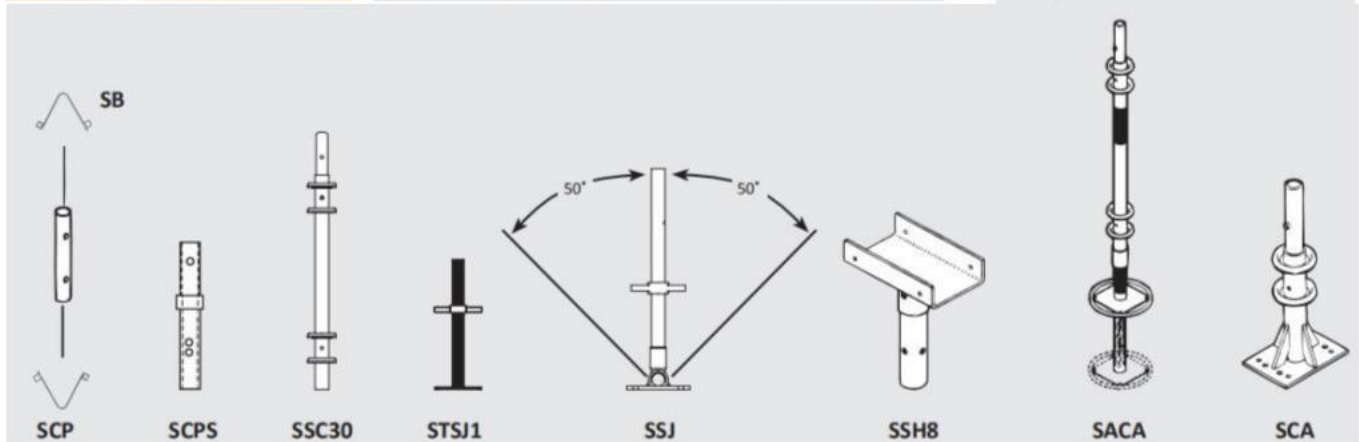
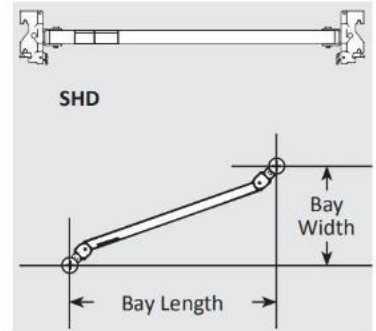


EG-S LOCK SYSTEM SCAFFOLD

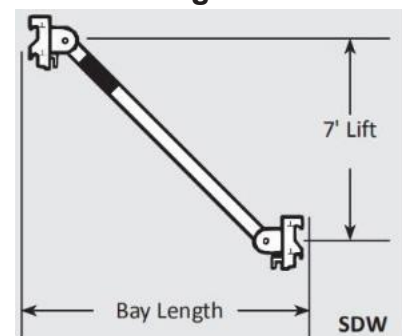
Vertical Posts



Horizontal Diagonals



Vertical Diagonals

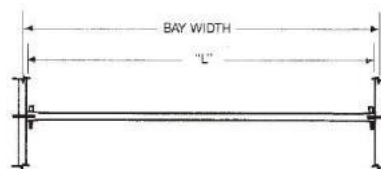


[For detail information](#)

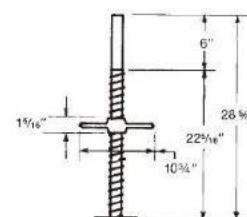
EG-Q LOCK SYSTEM SCAFFOLD



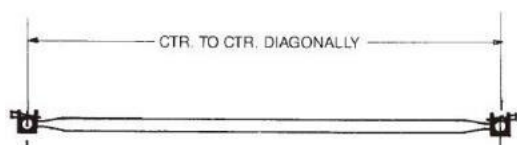
HORIZONTALS



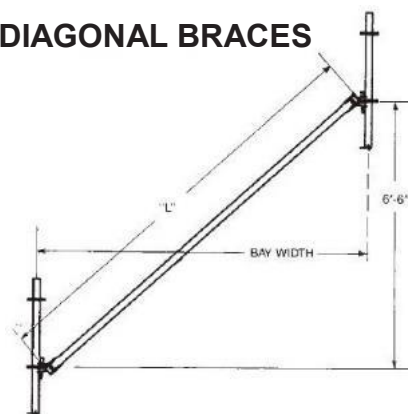
ADJUSTABLE LEG BASE



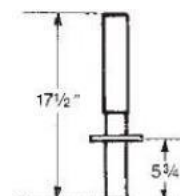
HORIZONTAL BRACES



DIAGONAL BRACES



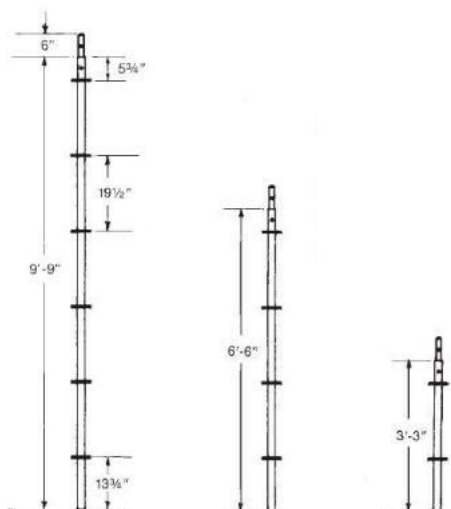
BASE COLLAR



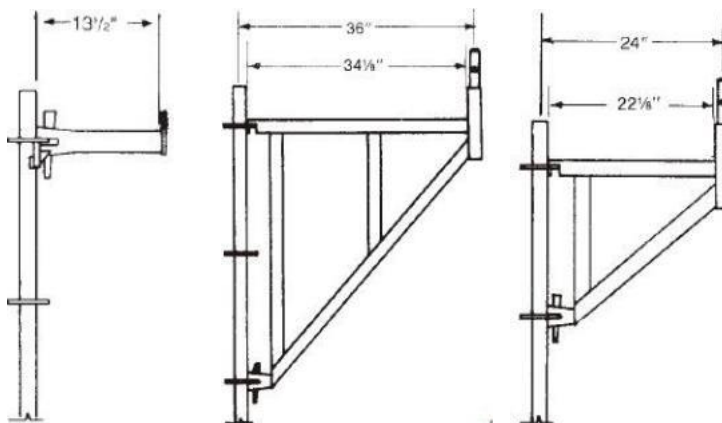
ADJUSTABLE SWIVEL BASE



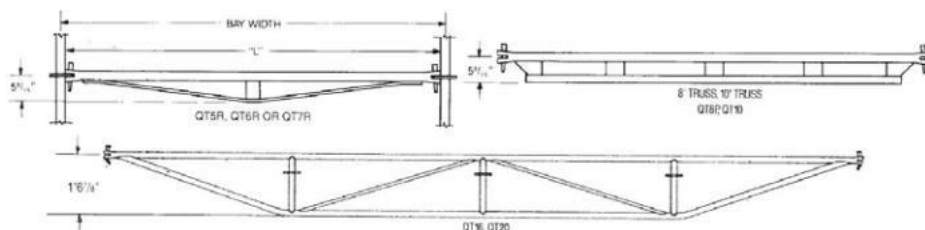
POSTS



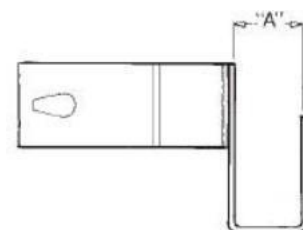
SIDEWALL BRACKETS



SIDEWALL BRACKETS



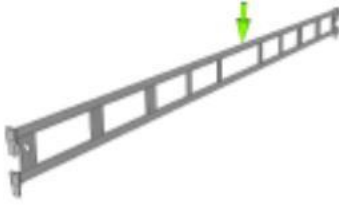
TOEBOARD BRACKET CLIP



[For detail information](#)

EG-H LOCK SYSTEM SCAFFOLD

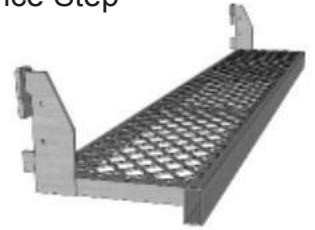
Ledger Beam



Single Tube Beam



Entrance Step



Landing Platform



Horizontal Guardrail Frames



Guardrail Tube



1m Handrail Post



Clip on Post



Guardrail Frame



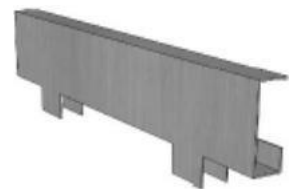
Folding Guardrail Frame



Base Jacks



Toe Boards



Stair Flights



Stair Guardrail Frame



Erection Platform

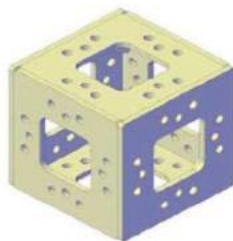


[For detail information](#)

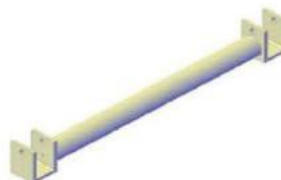
ALUMINUM PROP SYSTEM



425-580



425-581



425-583



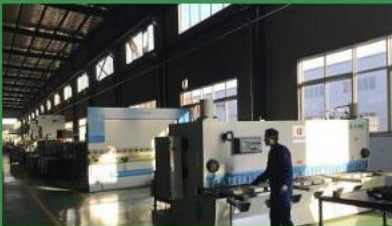
425-582

No.	Item	Material	Specification	Surface Treatment	U.Weight (KG)	Remark
425-580	Al. Adjust Base	6061-T6	As picture or sample	PC(part)	9.53	
425-581	Al. Square Base	6061-T6	T=10mm	Original	6.70	
425-582	Al. Column	6061-T6	0.6m Al. Column	Original	4.70	
	Al. Column	6061-T6	1.2m Al. Column	Original	7.60	
	Al. Column	6061-T6	1.8m Al. Column	Original	10.52	
	Al. Column	6061-T6	2.4m Al. Column	Original	13.50	
	Al. Column	6061-T6	3.0m Al. Column	Original	16.40	
425-583	Al. Beam	6061-T6	0.6m Al. Beam	Original	1.20	
	Al. Beam	6061-T6	1.2m Al. Beam	Original	1.70	
	Al. Beam	6061-T6	1.8m Al. Beam	Original	2.22	
	Al. Beam	6061-T6	2.4m Al. Beam	Original	2.75	
	Al. Beam	6061-T6	3.0m Al. Beam	Original	3.30	
425-584	Al. Beam	6061-T6	0.6m Al. Beam	Original	1.4	
		6061-T6	1.2m Al. Beam	Original	2.2	



no	description	material	sizes	surface finishing	KG/pc	Remark
1	Aluprop 3500-2250	6061-T6	extension 3500mm close 2250mm	powder coated	23.7	
		6061-T6	extension 3000mm close 1800mm	powder coated	21.4	

[For detail information](#)



Zhonghong(Tangshan) construction engineering Co.,Ltd
 Address: No.35,Rongcheng Road,LUTAI Economic Development Zone
 Mob: +86 139 3333 9777
 Email: RD@zhonghongts.com